



# HELLO

Welcome at Lista Office LO

February 2014



# Content

Lista Office LO

Spare parts online portal



# Content

Lista Office LO

Spare parts online portal

**LO**

**WE LOVE MONDAY.**

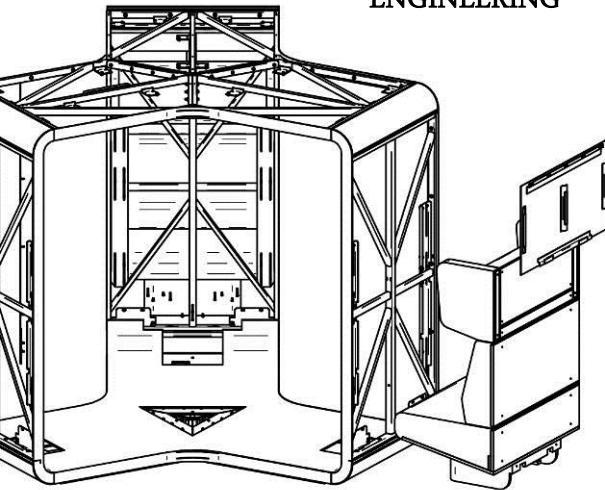
# Bye-bye, Monday Blues

Lista Office LO designs and implements office solutions that make people work enthusiastically and successfully – even on Mondays.

Our furniture systems and space concepts show off their strengths, right from the first day of the week. For, in a world where working hours and processes are becoming more and more flexible, we do not want to simply furnish office space, but completely tailor it to the needs of your company and your staff.

That might not necessarily make Monday your favourite day of the week, but we're working on it.

ENGINEERING



LINEAR ELEGANCE

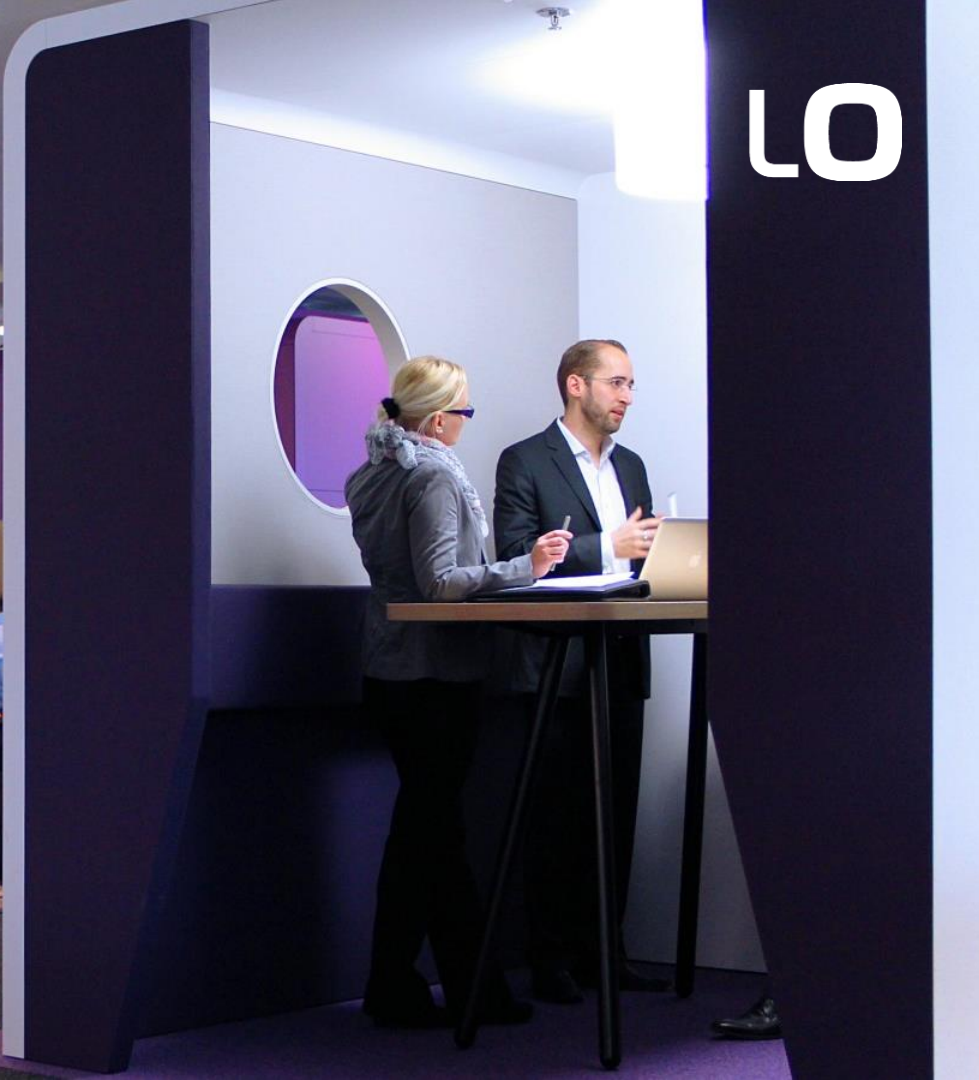
# LOVE

FUTUREPROOF SYSTEMS



STEEL











Source: YouTube



**FLOW WORK**

## Flow Work by Lista Office LO

**We work best when we completely forget that we are working. Lista Office LO promotes this flow effect with a performance system that caters to all levels of office furnishings – and connects up intelligence: Flow Work by Lista Office LO.**

CONCEPTS

FURNISHINGS

ELEMENTS

# Concepts

## How can your workplace give you the edge?

Lista Office LO works with you to bring to life the special concept that will take your corporate strategy and culture into the future – with reliable services, from the initial idea through to a functional workplace.

# Furnishings

## Which system is deployed at your workplace?

Be it inspiration, concentration or cooperation, Lista Office LO develops premium furnishing systems – using steel as a base material to guarantee sustainability.

# Elements

## What's the missing piece to your workplace?

Lista Office LO provides you with first-class solutions from under one roof – from seating, lighting and acoustic modules through to textiles and accessories.

# LO at a glance

## **Nr. 1 in the office**

Leading position with office furniture systems in the Swiss market

## **Fullservice-Partner**

Planning services, furnishing systems and elements

## **Made in Switzerland**

Production facilities in Degersheim und Arnegg

## **Competence near you**

250 employees – 30 locations

## **Strong infrastructure**

Engineering, CAD, logistics, facility management, etc.



**FLOW WORK**



LO



LO



LO





LO





LO

LO





LO



LO





# Content

Lista Office LO

Spare parts online portal

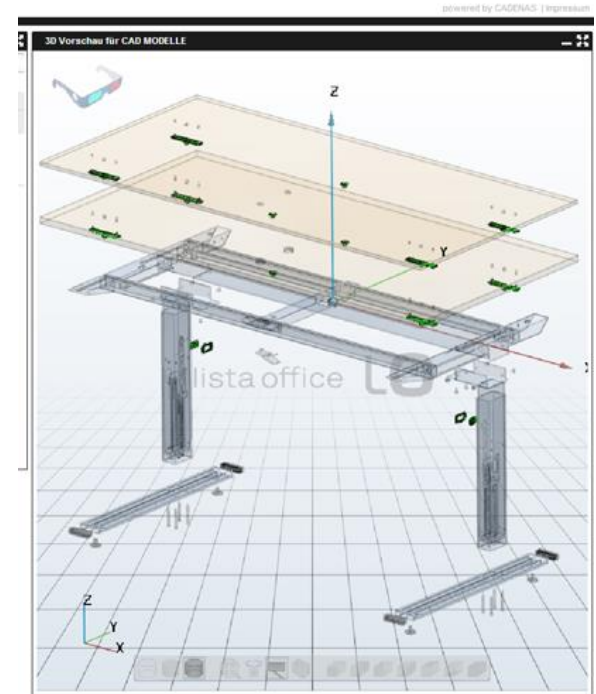
# Spare parts catalog so far

- External solution
- Stand alone without interface
- High maintenance and slow updates
- Updates only via external service partner



## Goals – new solution

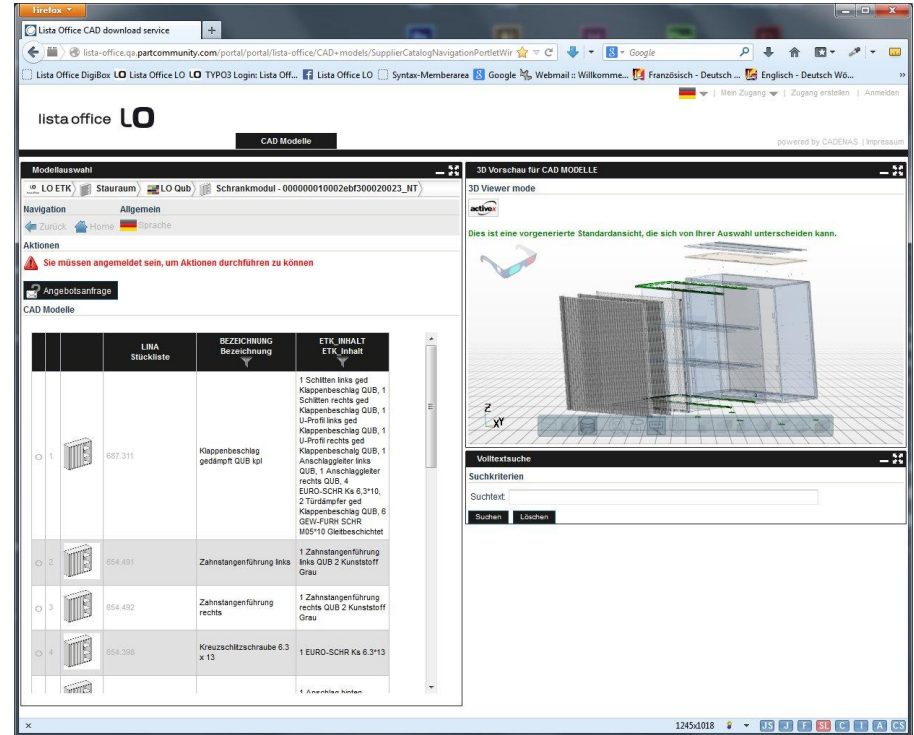
- In-house solution and hosting at LO
- Use of existing commercial data (asimbase)
- Use of existing CAD data
- Simple and fast data management via automated workflow
- 3D visualisation of spare parts



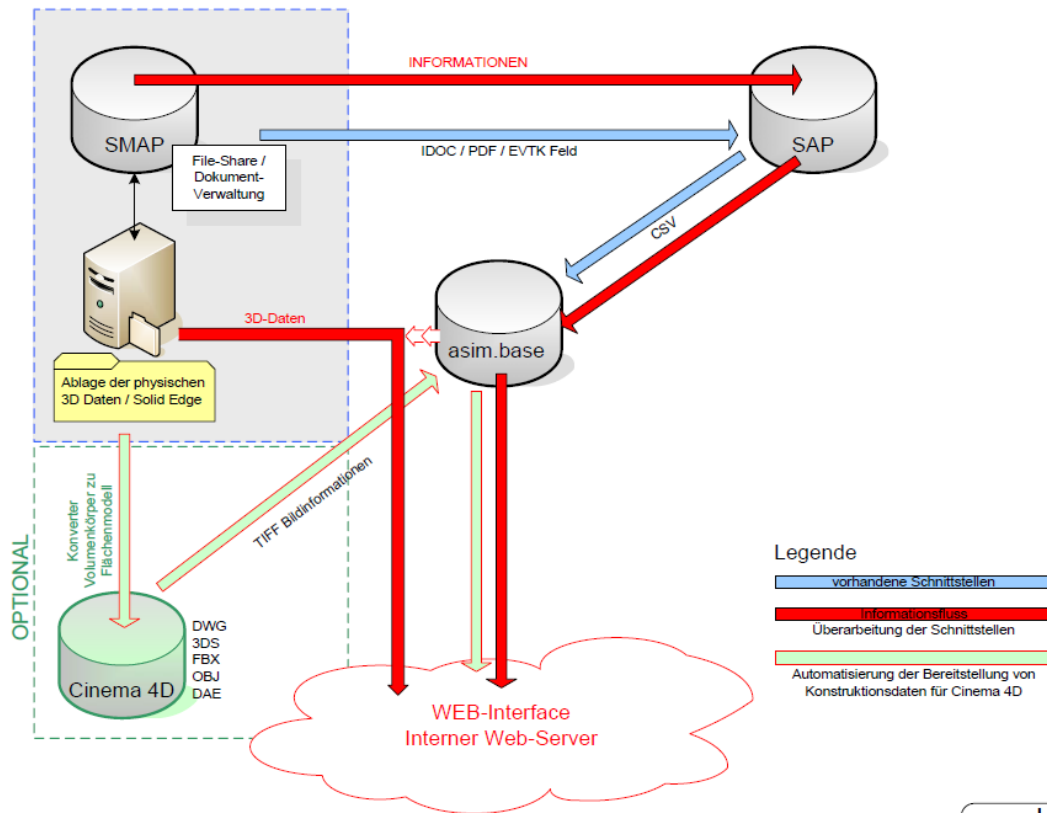
# New spart parts online portal

- Linking of existing database solutions:

- asim.base
- SAP
- CAD database



# Definition of the database structure



# Co-operation asim & Cadenas

## CADENAS

- **PARTcommunity Enterprise Technology**  
Web server and web frontend for the part management and selection with connection to the existing ERP system
- **Solid Edge Converter**  
Transfer and conversion of the component geometry (Solid Edge via STL)

## Asim

- **asim.base**  
Access to part numbers, texts, images and CAD data via VBS based **API** (Visual Basic Scripting Application Programming Interface) and transfer to the corresponding product aggregation with connection to existing ERP system

Publication of CAD data, part selection and purchase order via PARTcommunity portal.

# Live Demo

lista office **LO**

Deutsch | Mein Zugang | Zugang erstellen | Anmelden

CAD Modelle

powered by CADENAS | Impressum

**Modellauswahl**

LO ETK | Arbeitsplatzsysteme | Choice

sitz/steh-arbeits-tisch "open" rechteckig - Arbeitstisch oval

Navigation Allgemein

Zurück Home Sprache

Angebotsanfrage

CAD Modelle

	LIMA Stückliste	BEZEICHNUNG Bezeichnung	ETK_INHALT ETK_Inhalt
1	354.551	Tischplattenbefestigung KH und Holz	12 Schrauben, 4 Hafeplatten, 6 Gleitrolle Schiebeführung
2	354.561	Ersatzteilset Bedienelement Auf / Ab	Inkl. Verkabelung
3	354.566	Ersatzteilset Bedienelement Memory	Inkl. Verkabelung
4	354.641	Tischplattenbefestigung VK und Linoleum	12 Schrauben, 4 Hafeplatten, 6 Gleitrolle Schiebeführung

**3D Vorschau für CAD MODELLE**

LO

**SEE YOU NEXT  
MONDAY?**